



Roadmap and Outcomes

Brochure II



TeRRIFICA project has received funding from the European Union's Horizon 2020 research and innovation programme under grant agreement No. 824489

The TeRRIFICA project has been a joint effort of three research institutions, three non-profit organisations, one public association of universities and one public institution for science promotion.

WILA Bonn, Bonn Science Shop – Project coordinator
Bonn, Germany

Rhine-Waal University (HSRW)
Kleve, Germany

Education for Sustainable Development Association (AESD)
Minsk, Belarus

The Center for the Promotion of Science (CPN)
Belgrade, Serbia

The University of Vechta (UoV)
Vechta, Germany

Adam Mickiewicz University (AMU)
Poznan, Poland

Sciences Citoyennes (SciCit)
Paris, France

Catalan Association of Public Universities (ACUP)
Barcelona, Spain





The EU funded project **TeRRIFICA** (**T**erritorial **R**esponsible **R**esearch and **I**nnovation **F**ostering **I**nnovative **C**limate **A**ction) emerged to influence climate change policies and actions by fostering Responsible Research and Innovation (RRI) in 6 European regions. TeRRIFICA contributed to reducing the harmful effects of climate change through engaging a diverse number of stakeholders, from scientific experts to citizens and decision makers, into climate mitigation and adaptation processes.

The project was developed in three phases: **(1)** getting data to gain knowledge; **(2)** matching data and capacitating diverse stakeholders; and finally, **(3)** exploring and planning possible solutions to defy climate change. The project group built co-creation teams, looked for best practices and transformed the six pilot regions into living labs to create climate action plans.

Visit the TeRRIFICA website and follow us on social media to get an insight into our project results!

www.terrifica.eu



@TeRRIFICA_



TeRRIFICA Project



The TeRRIFICA Roadmap

KNOWLEDGE. During phase one, the work focused on the gathering of information for contextualisation of the project's objectives, the establishment of processes to collect data and co-create activities with relevant stakeholder groups. The basis for TeRRIFICA activities was set during this stage and the crowd-mapping tool was designed.

CAPACITY BUILDING. Phase two was about using one's own knowledge to dive into topics of climate change adaptation in local contexts. This was made possible through the exchange of knowledge between the civil society, academia, and local governments. To achieve this, living labs in the six pilot regions were established. During this stage, the crowd-mapping tool started to receive contributions from the citizens across Europe and beyond.

ACTION. Finally, the aim of phase three was to explore future visions of a climatic landscape in 2030 and exploiting the possibilities of action that were suggested through the crowd-mapping tool by actors in the pilot cities and regions. These future visions integrated RRI into climate actions through active science and society collaboration. New forms of innovations were co-created in an open, transferable environment.

Learning from exciting European examples

The Pilot Regions teams identified case studies of community-academia research partnerships from their regions or countries related to climate change adaptation and/or mitigation. The projects were analysed taking into account their aims and objectives, the way of communication and participation, conflicts and barriers, and good participatory research practices. This analysis was published in the **Case Studies Report**, which includes a summary of the projects that highlights common outstanding elements for the development of future climate actions. The Report can be found on www.terrifica.eu.

To implement the TeRRIFICA roadmap, the six pilot regions analysed the state of their territories to understand the main issues to be tackled and identify stakeholders to be involved. Local climate change challenges were detected, such as air quality, water management, urban planning, or high temperatures. A common feature in certain regions was the low awareness and knowledge about the relevance of local climate challenges and how to respond to them collaboratively with stakeholders, while others had closer access to their already committed local administrations, which eased the exchange and influence at the political level.

Due to the different pre-conditions, each region worked with their selected groups of stakeholders and through a variety of activities to meet their goals. E.g., the rural region of Oldenburger Muensterland identified climate friendly gardening as a door opener to get in touch with citizens, while Poznań worked in close cooperation with Poznań Metropolis Association to reach out to the local municipalities.

As a result of the adaptation processes in the different contexts and the work done in collaboration with stakeholders, achievements were made in multiple areas, most of which will have an impact beyond TeRRIFICA.

- The region of **Belgrade** established new networks for future climate actions using co-creation, while the local administrations have started using the crowd-mapping data to plan their climate actions.
- The partners from **Poznań** helped establish the Climate Change Adaptation Plan for Poznań Agglomeration and published scientific papers about the TeRRIFICA results.
- The region of **Oldenburger Muensterland** offered a platform for people to exchange and learn how to become climate active.
- The **Barcelona Metropolitan Area** strengthened their local network through the project activities.
- After building a network of teachers from agricultural high schools, the region of **Normandy** is now developing a regional network on Participatory Research in Agroecology to address Climate Change.
- The **Minsk** pilot region created an eco-friendly transport community, engaging more than 200 teachers, students and parents in the neighborhoods.



Project outcomes

Throughout this working process, TeRRIFICA has developed several outcomes addressing climate action and RRI for the inspiration of additional regions. The main outputs and guidelines of the project can be found on the website (scan the code!).



Guide on Engagement and Co-Creation

The TeRRIFICA Guide on engagement and co-creation aims at fostering stakeholders' engagement and co-creation within the context of climate mitigation and adaptation. This guide provides (non-)prescriptive ideas, best practices, recommendations, and methodologies that can serve as a starting point to engage stakeholders and co-create processes within climate change policy making that can be transferable to other regions in Europe as well.

Other than the guides and written documents, the pilot regions leaders developed a series of outputs that contributed to the dissemination of TeRRIFICA. Partners from CPN in Serbia published a series of creative videos under the campaign name "Cool down the city!", which was created to approach the citizens of Belgrade and inspire them to engage in the crowd-mapping by sharing their experiences.

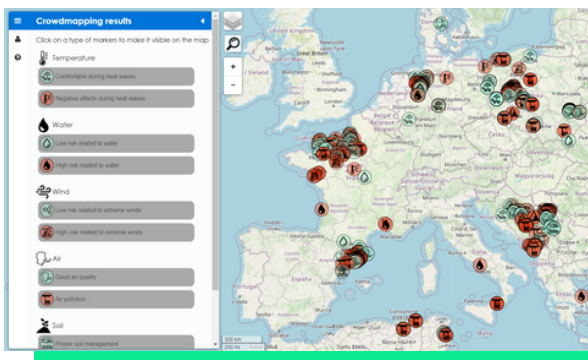
The "Cool down the city!" campaign and more videos from all the TeRRIFICA pilot regions can be found on the project website.



TeRRIFICA crowd-mapping tool

One of TeRRIFICA's aims was to recognize and to gather citizen knowledge and findings on climate change challenges in the six pilot regions. The data collection in the different territories contributed to the identification of relevant variables and factors affecting the effectiveness of climate action. Findings were crucial for the development of climate change adaptation plans and to support TeRRIFICA's final goal to induce institutional and governance changes.

The crowd-mapping method facilitated the involvement of multiple stakeholders in the identification of green, grey, and blue infrastructures in the regions. The mapping and assessment were also crucial for further TeRRIFICA actions. The contributions of diverse stakeholders in the different pilot regions and beyond are presented on an open accessible map complemented by an academic paper based on the findings of the tool and the option to replicate the experience in similar projects.



Read all about the crowd-mapping tool and how to replicate the experience on the TeRRIFICA website.

Open-Source: How to replicate the experience

The crowdmapping tool developed for TeRRIFICA is Open Source and available on GitHub. There, you can find a repository for the crowd-mapping components. This web mapping framework can be used to gather spatial data and insight from the public. We encourage you to use this component as a template for your own mapping project.



RRI France Climate Change
Spain Serbia Online Discussion
Climate Action Belarus Climate Adaptation
Climate Adaptation Pilot Regions
Climate Change
Mitigation
Good Practices Co-Creation Germany Climate Mitigation
Citizen Science Poland