

TeRRIFICA - crowdmapping

Concepts, functions, state of the tool



TeRRIFICA project has received funding from the European Union's Horizon 2020 research and innovation programme under grant agreement No. 824489

TeRRIFICA - crowdmapping

Concepts, functions, state of the tool

Michal Rzeszewski

Adam Mickiewicz University in Poznan



What is it?

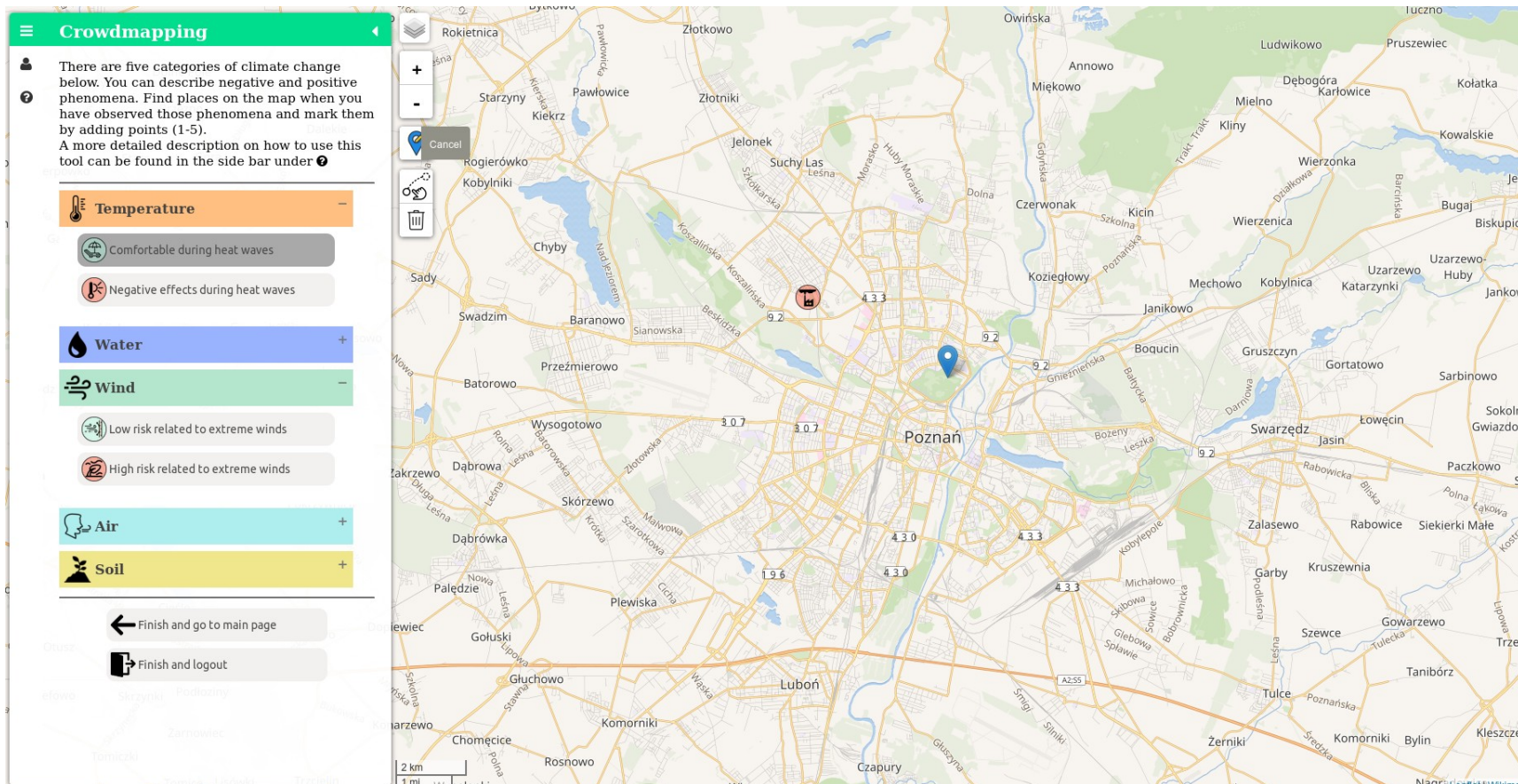
Crowdmapping tool is a web **map application** – a website with an interactive map.

Users can add **spatially located information** using various mapping tools – they can add points to the map and describe them.

It is **crowdsourcing** with a **mapping** twist.

Crowdmapping

It is a map where you can pin a marker to a specific place.



Crowdmapping

And add description with a help of a questionnaire.

Crowdmapping

There are five categories of climate change below. You can describe negative and positive phenomena. Find places on the map when you have observed those phenomena and mark them by adding points (1-5). A more detailed description on how to use this tool can be found in the side bar under ?

Temperature

Comfortable during heat waves

Negative effects during heat waves

Water

Low risk related to extreme winds

High risk related to extreme winds

Wind

Air

Soil

Finish and go to main page

Finish and logout

If you can please provide answers for questions below. They are not required - you can just click green **SAVE** button at the bottom of this window

Justification: During extreme heat waves I feel particularly comfortable here because of

trees and green areas (lawns, parks, bushes) that give shade

are non existent are barely present are present are numerous are very numerous

water bodies (lakes, ponds), rivers, streams and other watercourses

are non existent are barely present are present are numerous are very numerous

water devices (fountain, swimming pool, water curtain, other)

are non existent are barely present are present are numerous are very numerous

devices or installations that give shade (umbrellas, temporary roofs, others)

are non existent are barely present are present are numerous are very numerous

ventilation corridors

are non existent are barely present are present are numerous are very numerous

other reasons specific to this area (Please explain below what are they)

How would you name this place?

Save

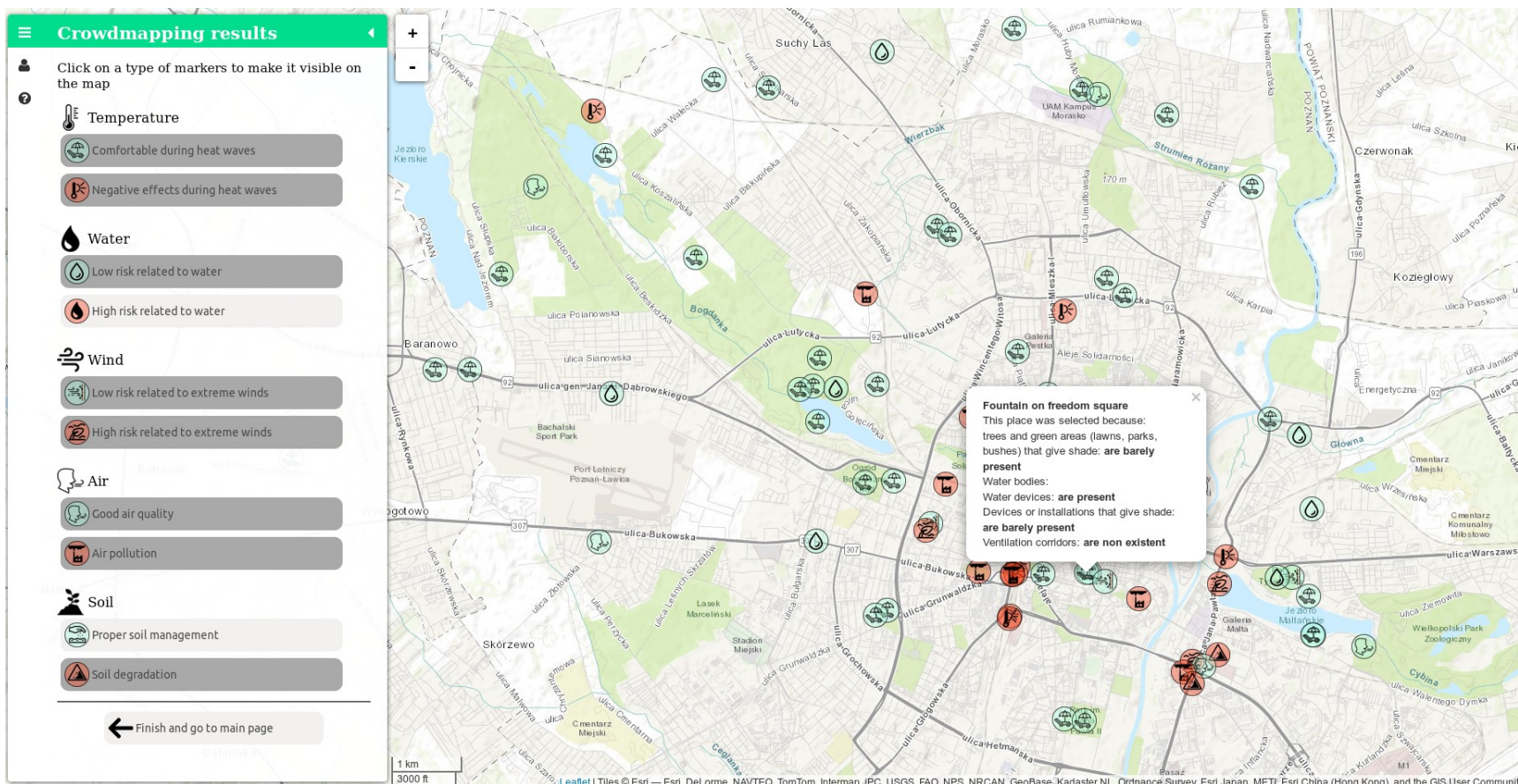
Cancel

What does it do?

- It **collects spatially located answers** – points marked on the map by respondents together with comments and survey answers associated with specific location
- Data will be available for the analysis and **future use** e.g. during Living Labs
- It promotes **learning by doing** – questions and background information provide users with the possibility of gaining knowledge on climate change
- Final map provide **crowdsourced information** on climate change in the region that is accessible to anyone interested

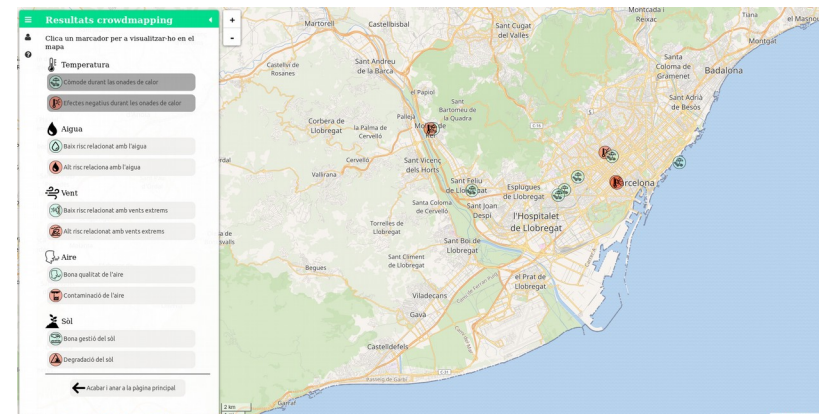
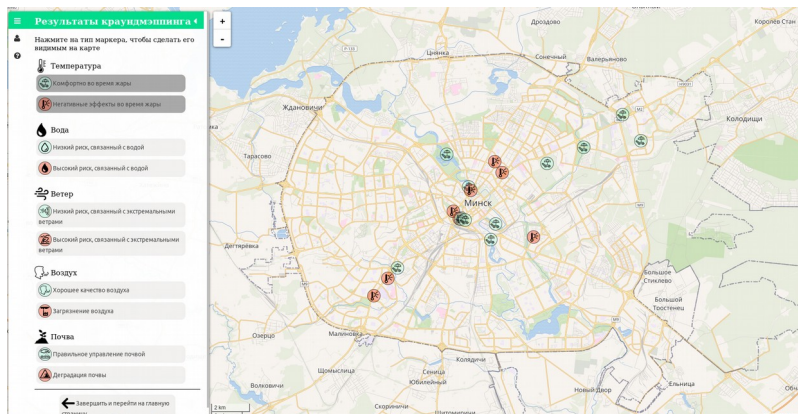
Crowdmapping

Map of all the results provided by the volunteers
give region specific climate change information



Region specific

- There are **7 local version** of the tool for different regions: Belarus, Catalonia, France, Germany, Poland, Serbia, Spain and an additional English one with different maps and boundaries.



Additional functions

- Points can be moved or deleted by users that have created them
- Attribute data can be edited
- Users evaluate impacts using Likert scale which provide quantitative data
- For negative impacts users can propose solutions

State of the tool

- **ALPHA** version (English only) completed – internal testing finished
- **BETA** version and external beta tests with users completed
- **FINAL** version is being developed after changes suggested during tests

Ongoing development

- Development of the tool is driven by principles of User Centered Design and each iteration is tested...
- ... and this is why it is taking us so long...we started working on this tool in February 2019.
- Currently it is being modified according to beta tests results which indicated the need to simplify the tool and to improve usability
- But we will be ready in October!

Be ready to contribute!



TeRRIFICA Consortium

